

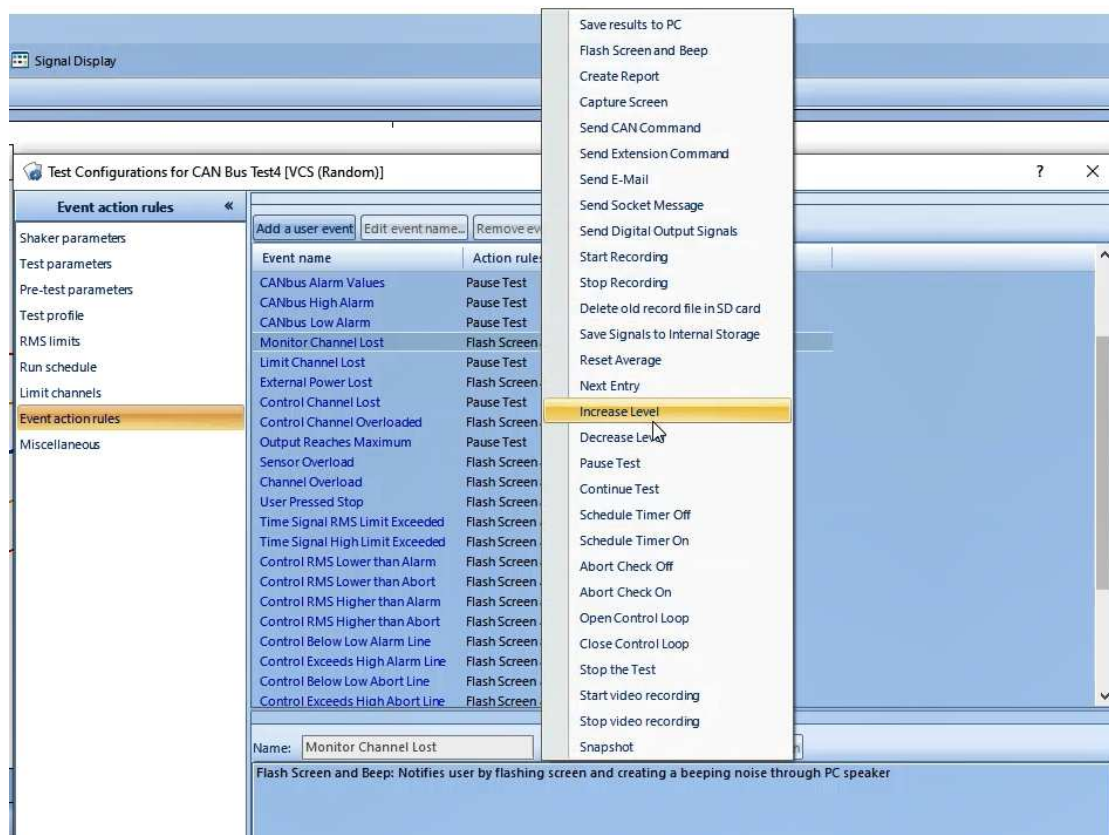
VCS Automation Features

Event-Action Rules

There are many events that can occur during test operation, including certain response levels being reached, limits being exceeded, and user caused events such as pause or stop. The Event-Action Rules feature offers the most flexibility in controlling the system operation by customizing the response to these events.

Event-Actions Rules define the response of the controller to these test events. Many actions are available as custom responses, such as sending an e-mail or stopping the test. When an event occurs, the corresponding action rule(s) will be automatically applied by the software.

In the Event Action Rules user interface of EDM, the left column, Event Name, lists events while the right column, Action Rules, lists the corresponding actions taken by the software. System events are in blue words and user events are in green words. User events can be manually added, renamed, and removed. Click “Add a User Event” button to add a new user event to the event list.



Run Schedule

When a test runs, it executes the entries in the **Run Schedule**. Each entry defines which profile to run, what level to run at, and the number of times to repeat.

Schedule

Edit entryRemove entryDisable entryMove upMove down

---Schedule begin---

Start Recording (Start Recording)

Loop number: 1

Level 25.00%, duration 00:00:10

Level 50.00%, duration 00:00:10

Send DIO (Digital Output on Output #1)

Level 75.00%, duration 00:00:10

Flash Screen and Beep (Flash Screen and Beep)

Level 100.00%, duration 00:05:00

Save signals to PC (Save results to PC)

End loop

Flash Screen and Beep (Flash Screen and Beep)

Send DIO (Digital Output on Output #1)

Loop number: 1

Loop number: 2

Level 45.00%, duration 00:00:10

Level 80.00%, duration 00:00:20

End loop

Flash Screen and Beep (Flash Screen and Beep)

Level 100.00%, duration 00:00:30

End loop

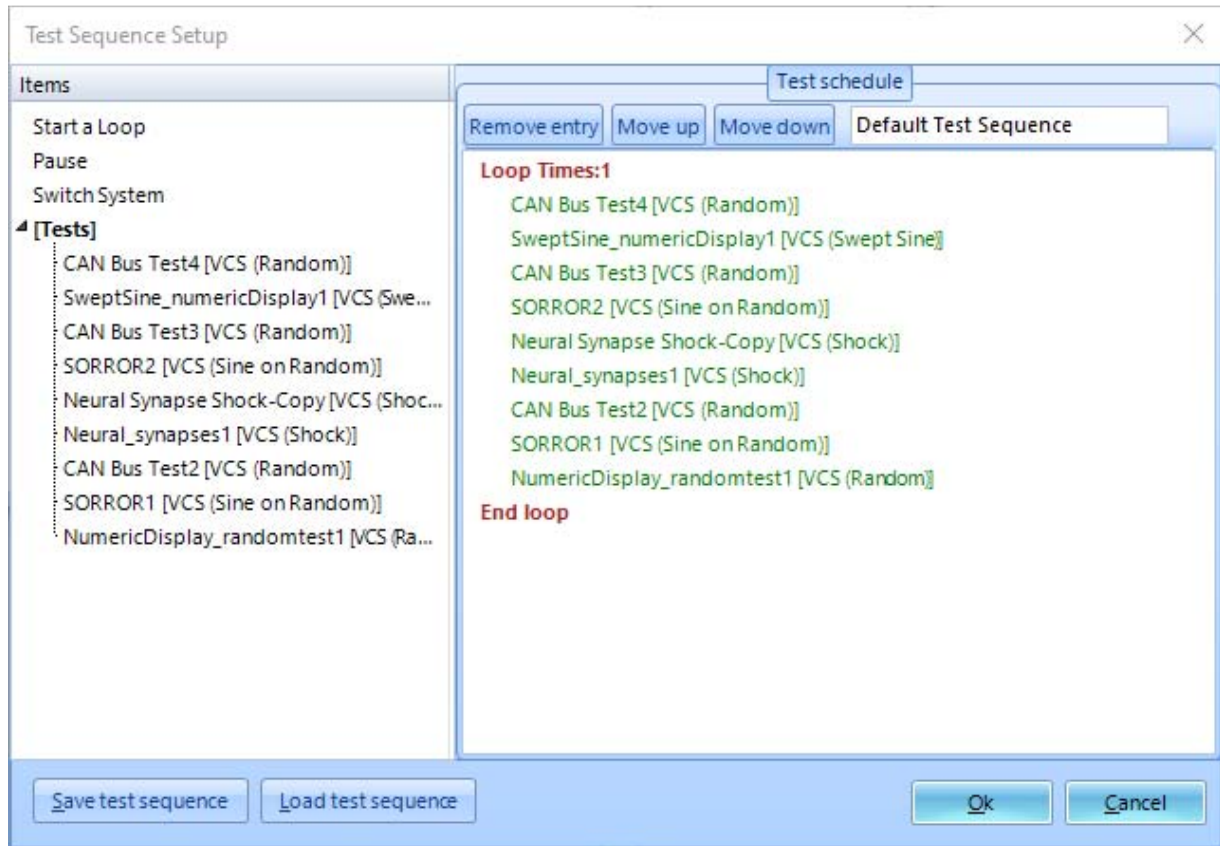
Stop Recording (Stop Recording)

My Report (Create Report)

This schedule can also include loops to repeatedly execute a series of entries. The run schedule can also activate any user defined events included in the **Event action rules**.

Test Sequence

The test sequence allows users schedule multiple tests to be run sequentially.



Additionally, users can specify intervals between subsequent tests and conditions for if tests are aborted/cancelled.

Test Sequence
?
X

Current test sequence: Default Test Sequence
Edit sequence

If the test doesn't exist:
☒ Skip the test
☐ Stop sequence

If the test is aborted/cancelled:
☒ Skip to next
☐ Stop sequence

Waiting time after test switched (s):
5

☐ Ignore all warning messages when running test sequence

Loop Times:1
CAN Bus Test4 [VCS (Random)]
SweptSine_numericDisplay1 [VCS (Swept Sine)]
CAN Bus Test3 [VCS (Random)]
SORROR2 [VCS (Sine on Random)]
Neural Synapse Shock-Copy [VCS (Shock)]
Neural_synapses1 [VCS (Shock)]
CAN Bus Test2 [VCS (Random)]
SORROR1 [VCS (Sine on Random)]
NumericDisplay_randomtest1 [VCS (Random)]
End loop

Start
Start from selected test
Pause
Go to next test
Stop
Open log file

Status: Ready

Close

ANALOG
DIGITAL



GERÄTE UND SYSTEME FÜR
FORSCHUNG • ENTWICKLUNG • VERSUCH • SERVICE

ADM Messtechnik GmbH & Co. KG

Zum Wartturm 9 · 63571 Gelnhausen

Tel. (06051) 916557-1 · Fax 916557-9

sales@adm-messtechnik.de